

**SHOP &  
PAY LATER  
@PSSLAI**  
with our merchant partners

**Heritage Park**  
FORT BONIFACIO

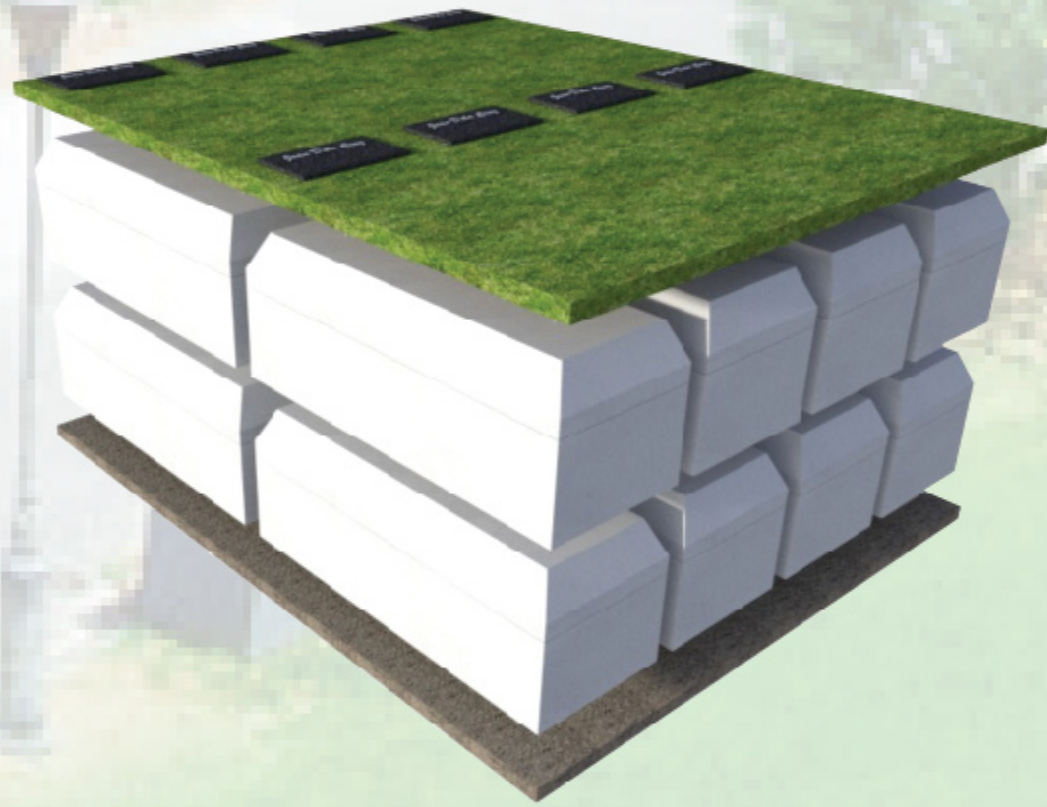
**DISCOUNTED RATES  
EXCLUSIVE FOR PSSLAI MEMBERS**

\*varies depending on the chosen lot



**Lawn Lots**

Lot Size: Single Plot 1.00M x 2.44M (2.44sqm) Double depth burial for 2 full-body vaults



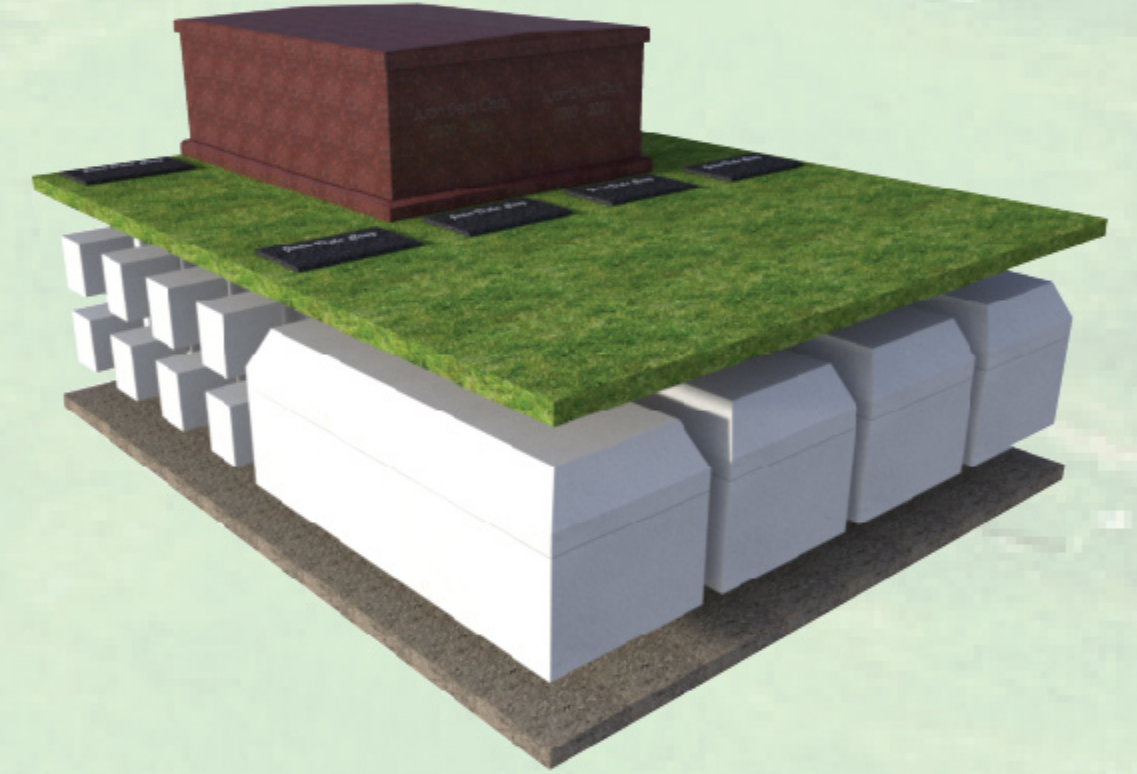
**Garden Lots**

Lot Size: 8 Plots 4.00M x 4.88M (19.52sqm) Up to 8 double depth burials for a total of 16 full body vaults or cremation bone vaults



**Private Estate Lot**

Lot Size: 16 Plots 9.76M x 4.00M (39.04sqm) Up to 16 double depth burials for a total of 32 full body vaults



**Garden Monument Memory Place**

Lot Size: 8 Plots 4.00M x 4.88M (19.52sqm) Single full-body internments and up to sixteen urns below ground internments

**CREDIT  
BUILD  
LOAN**

for as low as **7.50% p.a.**

\*8% Add-on Rate p.a.: 3 yrs to 5 yrs. EIR Rate p.a.: 3 yrs @15.5585%, 4 yrs @15.3271%, 5 yrs @15.0768%  
\*7.75% Add-on Rate p.a.: 3 yrs to 5 yrs. EIR Rate p.a.: 3 yrs @15.0710%, 4 yrs @14.8554%, 5 yrs @14.6201%  
\*7.5% Add-on Rate p.a.: 3 yrs to 5 yrs. EIR Rate p.a.: 3 yrs @14.5837%, 4 yrs @14.3833%, 5 yrs @14.1628%

**Mas CASH-saya sa PSSLAI!**  
Get a chance to win the GRAND PRIZE worth **P300,000**

MAJOR PRIZE P150,000 MINOR PRIZE P76,000 CONSOLATION PRIZE P1,000

Promo period:

February 1, 2024 - April 30, 2024

Earn one (1) eRaffle entry when you avail of a new salary-deducted or pension-deducted loan during the specified period

**LOAN to WIN these Awesome Deals!**

**MEMBERS MAY WIN**  
Business/Franchise Package, Travel & Tour Package for 2, Apple 15-inch Macbook Air, and P1,000



Promo period:

February 1, 2024 - June 30, 2024

Earn eRaffle entries when you avail of a Back2Back Loan 1, 4, Ready Loan, Vehicle Loan, or Pre-owned Vehicle Loan

**APPLY FOR A LOAN TODAY!**

Inquire today at <https://www.psslai.com/shop-and-pay-later-psslai/>



Shop and Pay Later



**#PSSLAIKaagapaySaPagAngatSaBuhay**  
Kick and fly, soar high with PSSLAI!

For inquiries, you may contact us at (02)87052100, 09989622081, 09255457493 and 09178567443 or send an email to [membercare@psslai.com](mailto:membercare@psslai.com) or send a direct message on Facebook. Visit our website at [www.psslai.com](http://www.psslai.com) and follow us on our social media pages



Ang PSSLAI ay exclusive para sa PNP, BFP at sa kanilang pamilya! - Pursuant to R.A. 8367  
PSSLAI is authorized by the Bangko Sentral ng Pilipinas. Contact BSP at (02) 8708-7087 or email at [consumeraffairs@bsp.gov.ph](mailto:consumeraffairs@bsp.gov.ph)